



Oniacor

Top IT solutions for your success. Achieve excellence in business.

Your brand,
our solution



ENTER

CODE `</>`

DEV

Your optimal partner

Oniacor transcends a standard IT service provider – transforming your business with innovative solutions.

No challenge is too great, as we merge traditional and cutting-edge technologies for your success.

Our Dynamic Tech Stack



What we do best

We provide best of these services

Outsourcing IT Service



Oniacor goes beyond traditional support to provide companies with stability, security and efficiency in IT

Development & Implementation



IT system development is the process of design, implementation, maintenance and review that helps companies achieve their objectives.

IT System Integration



Systems integration is a process that connects the various IT systems and applications in an enterprise so that they operate in a coordinated and unified manner.

IT Consulting



We offer complete IT consulting that includes evaluation, design and support of implemented solutions.

IT Audit



Our IT Audit services provide you with the information you need to better understand your IT infrastructure and provide actionable recommendations to ensure your network is protected

SME Digitalization



Transform your business into a modern and efficient one with our digitalization solutions through European funds.

Cloud Saga

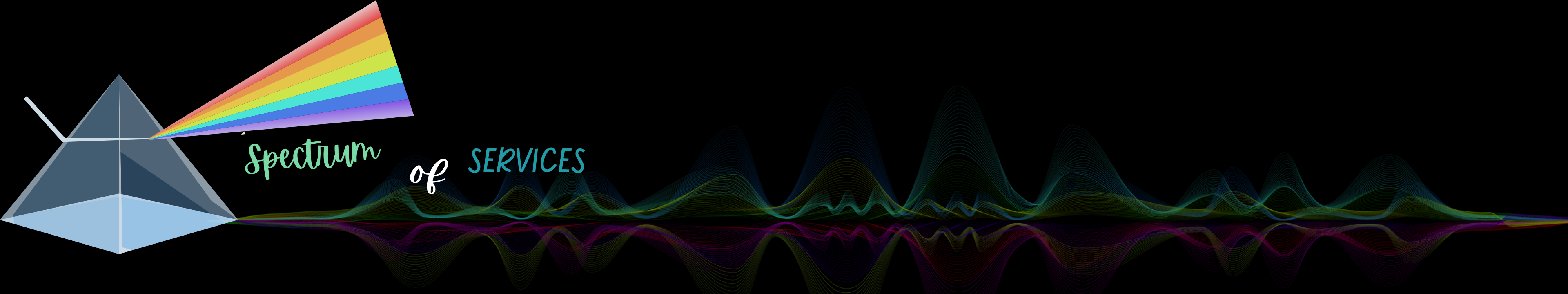


Migrate your SAGA accounting application to the cloud and enjoy the benefits of modern technology. Our cloud migration and hosting service offers you the optimal solution to manage your accounting more efficiently

Web Solutions



We Provide Web Development, Web Maintenance, Software Development & DevOps Solutions



Infrastructure

- Networking
- IT Help Desk
- Servers
- Virtualization
- Backup & Business Continuity
- 24x7 Monitoring

IT Security

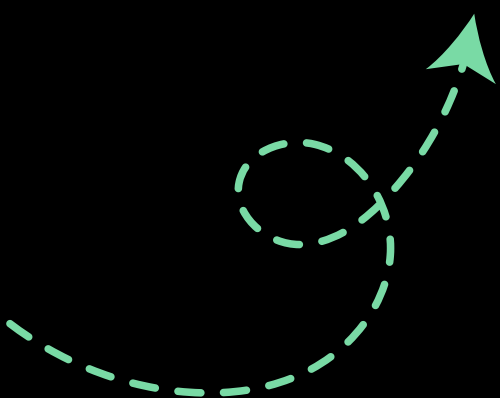
- Firewall
- Network Security
- Data Security & GDPR
- Application Security
- Security Users

Cloud

- MS Office 365 Migration
- Infrastructure Migration
- Private Cloud
- Public Cloud

Data Center

- Co-location Infrastructure
- Disaster Recovery
- Hosting
- Dedicated Hosting



We empower your success

We develop strategic and lasting bonds with our partners – we empower your growth through: Knowledge Sharing

Knowledge Sharing

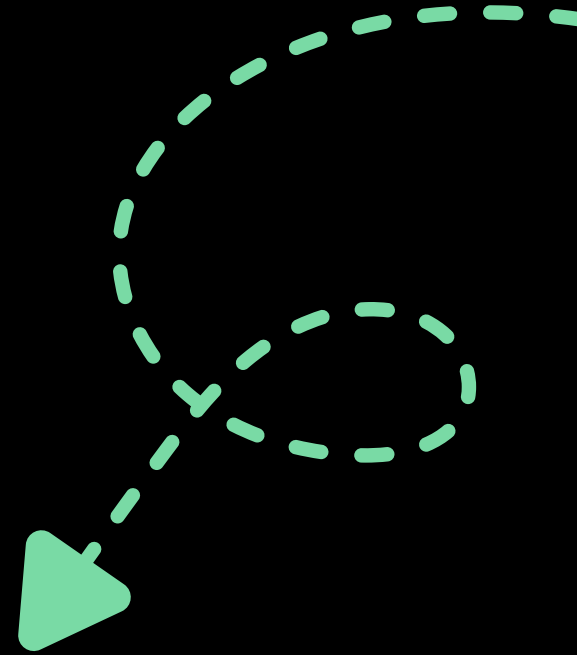
Oniacor's experts engage in knowledge sharing in IT solutions, security, and more. We regularly release informative materials on our website, as our ultimate goal is to develop an academy where we democratize access to information.

Global Reach

Oniacor can empower global expansion in over 50 countries, as we provide advisory services on international IT infrastructure.

Software and Hardware Solutions

We specialize in IT infrastructure solutions across industries, crafting custom software and hardware solutions for selected sectors.



Our goals in 2025 & 2026

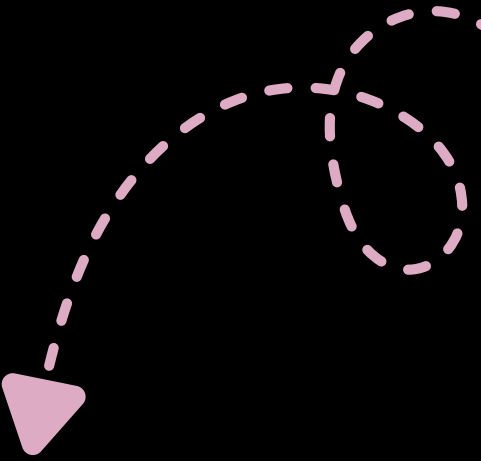
We aim to diversify our service offering and expand our client base, as we develop extensive know-how and become artisans to our partners' success.

Service More Clients

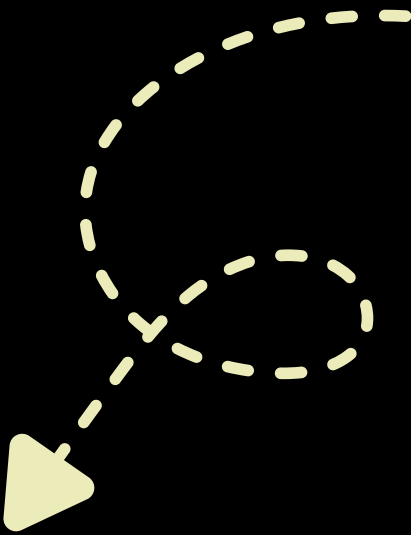
Extend our global reach by providing our services in new markets, such as over 50 countries, with a focus on enhancing IT support and solutions worldwide.

Build Strategic Alliances

Partner with key players in cross-functional areas, to leverage collective expertise and collaborate on highly complex IT projects.



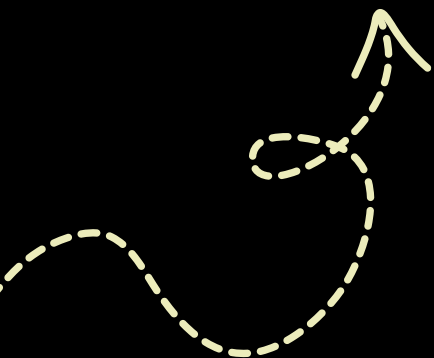
Outsourcing IT Service



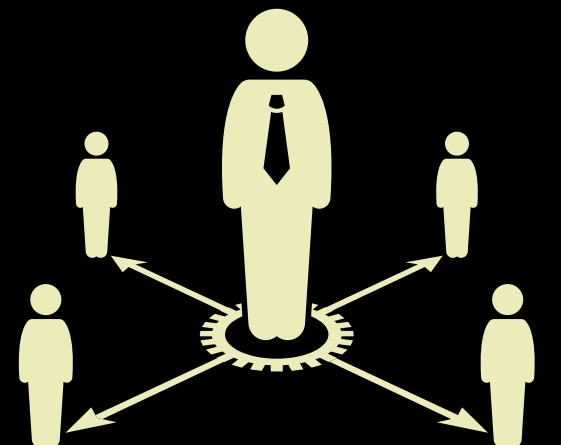
We provide complete IT solutions designed to keep your business running smoothly and securely. From PC and Laptop Management that keeps every workstation performing at its best, to custom Cloud Migration strategies that move your resources seamlessly to the cloud, we ensure your technology works for you - not against you.

Our Infrastructure Migration services guarantee a smooth transition with synchronized data and optimized performance, while our ongoing Cloud Management and Support give you peace of mind with 24/7 monitoring, user management, and fast troubleshooting.

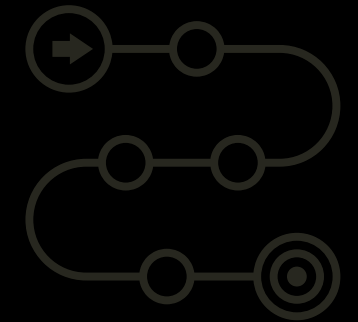
To keep your business protected, we also deliver Full Backup Solutions with real-time snapshots and instant rollback options — so your data is always safe, no matter what happens.



Check it out!

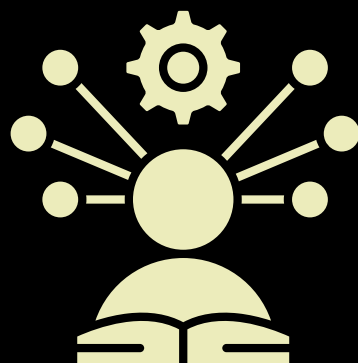


Development & Implementation

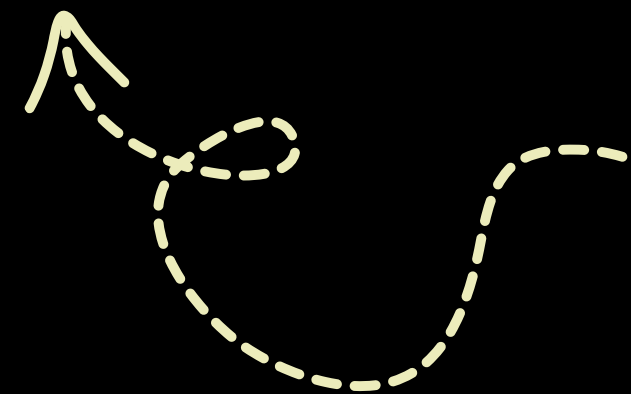


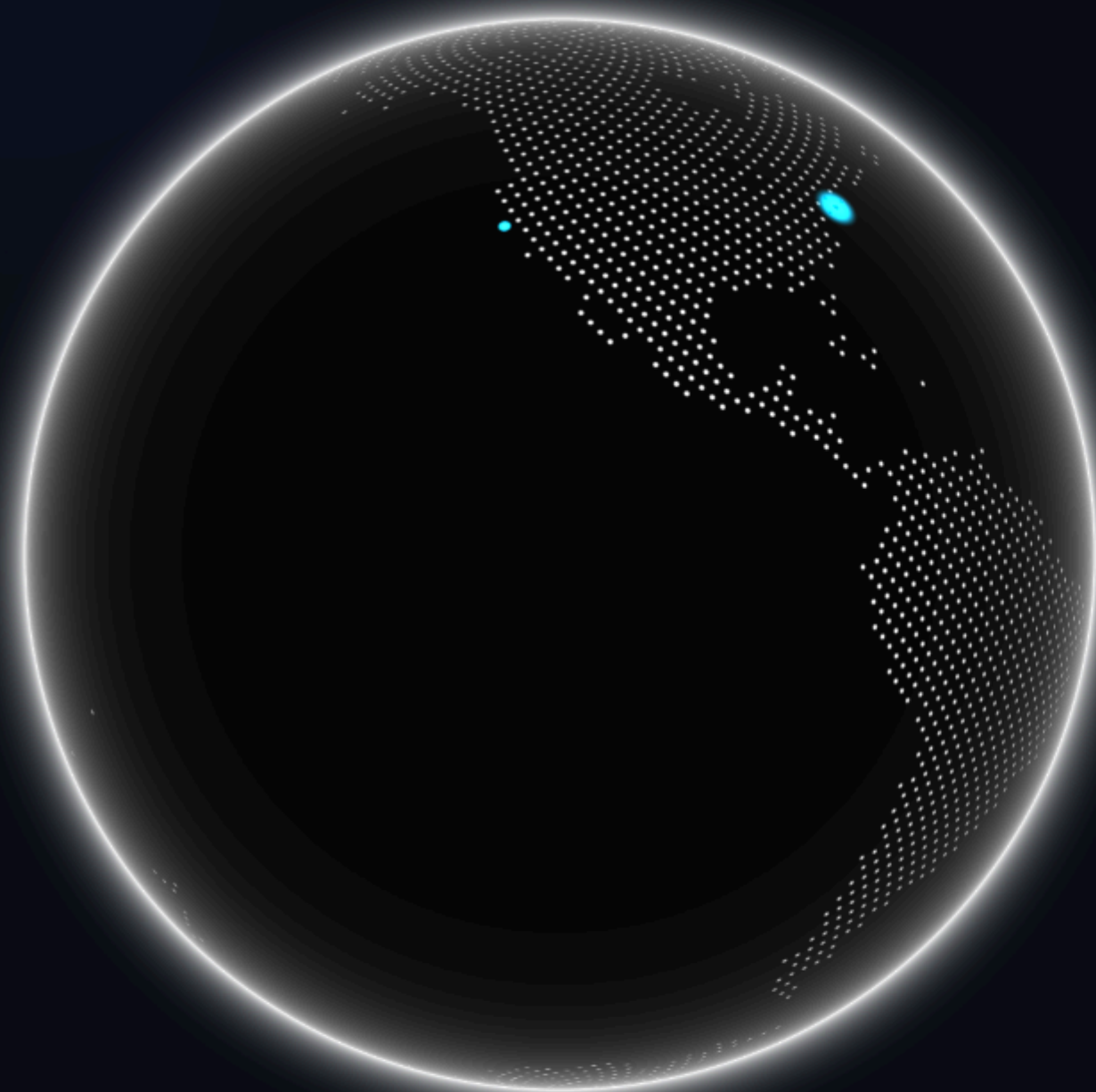
Our IT system development process is built to deliver **performance, reliability, and long-term value**. It begins with **strategic design**, where we define tailored IT solutions and the hardware that powers them. We then ensure **maximum security and reliability**, with robust infrastructure and redundant power that keep operations safe and uninterrupted.

Through **proactive maintenance**, we minimize downtime and keep your systems running at peak efficiency. Finally, with regular **system reviews**, we make sure your IT continues to align with your goals and adapts seamlessly as your business evolves.



Check it out!





Global Technical Support

Oniacor provides state-of-the-art technical support solutions for customers around the world. With a global network of experts, we are always close, regardless of time zone or location.

Security

IT security solutions compliant with international standards

Performance

System optimization for top performance

Covering

Available 24/7 in over 50 countries

Assistance

Dedicated teams for each client

IT Systems Integration

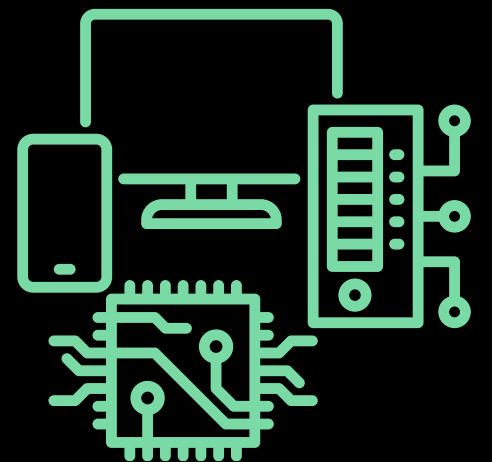


Seamless system integration empowers businesses to **unlock new levels of agility and innovation**. By connecting applications into a unified ecosystem, organizations gain faster access to accurate information, enabling teams to collaborate more effectively and respond quickly to changing demands.

This unified environment also supports **scalable growth**, allowing companies to expand operations without the burden of fragmented systems. With smoother processes and clearer visibility, decision-makers can focus on driving strategy forward, while technology quietly ensures that every component works in perfect harmony.



Check it out!



IT Audit

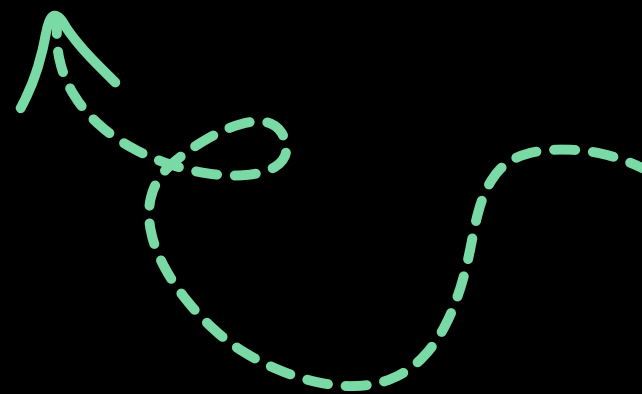


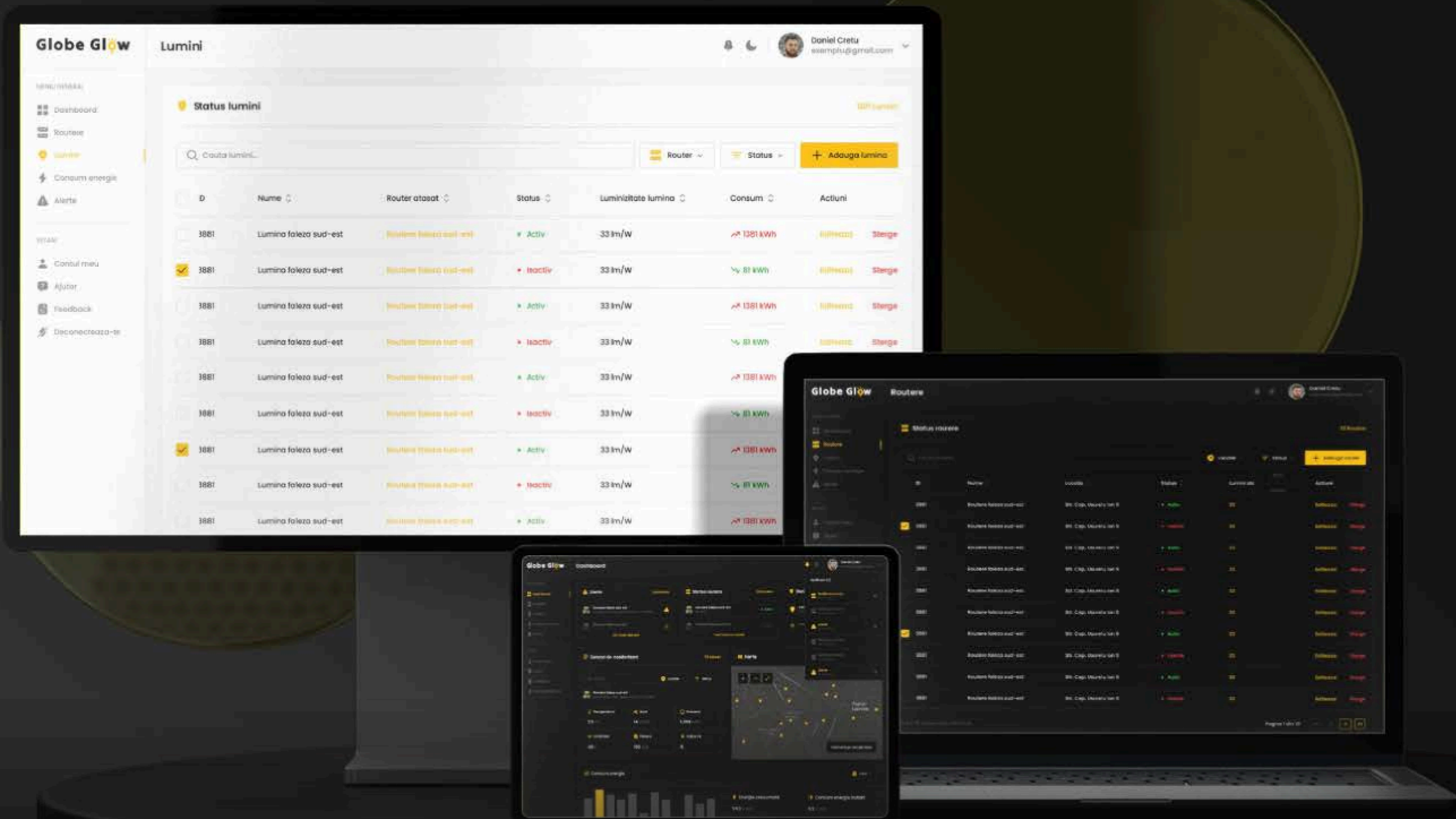
A strong IT infrastructure is the backbone of a **resilient and future-ready business**. By aligning networks, processes, and policies with modern standards, organizations create an environment that is both secure and adaptable.

This forward-looking approach not only safeguards against emerging cyber risks but also establishes a foundation that supports innovation and long-term scalability. With the right infrastructure in place, businesses can confidently pursue growth, knowing their technology is built to evolve alongside their ambitions.



Check it out!





Globe Glow

Lumini

Daniel Cretu
example@gmail.com

- Dashboard
- Routere
- Lumini
- Consum energie
- Alerte
- Contul meu
- Ajutor
- Feedback
- Deconectare de la sistem

Status lumini

ID	Nume	Router asociat	Status	Luminizitate lumina	Consum	Actiuni
3881	Lumina foleza sud-est	Router foleza sud-est	Activ	33 lm/W	1381 kWh	Sterge
3881	Lumina foleza sud-est	Router foleza sud-est	Inactiv	33 lm/W	81 kWh	Sterge
3881	Lumina foleza sud-est	Router foleza sud-est	Activ	33 lm/W	1381 kWh	Sterge
3881	Lumina foleza sud-est	Router foleza sud-est	Inactiv	33 lm/W	81 kWh	Sterge
3881	Lumina foleza sud-est	Router foleza sud-est	Activ	33 lm/W	1381 kWh	Sterge
3881	Lumina foleza sud-est	Router foleza sud-est	Inactiv	33 lm/W	81 kWh	Sterge
3881	Lumina foleza sud-est	Router foleza sud-est	Activ	33 lm/W	1381 kWh	Sterge
3881	Lumina foleza sud-est	Router foleza sud-est	Inactiv	33 lm/W	81 kWh	Sterge
3881	Lumina foleza sud-est	Router foleza sud-est	Activ	33 lm/W	1381 kWh	Sterge

Globe Glow

Routere

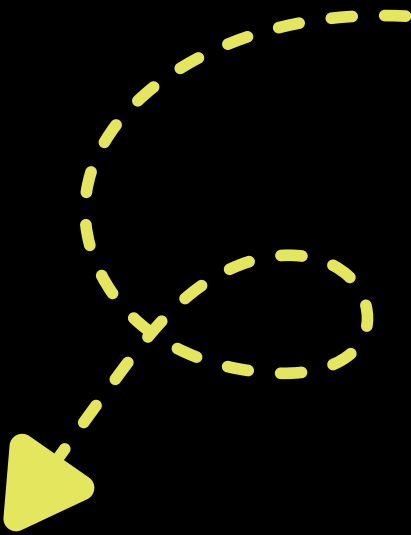
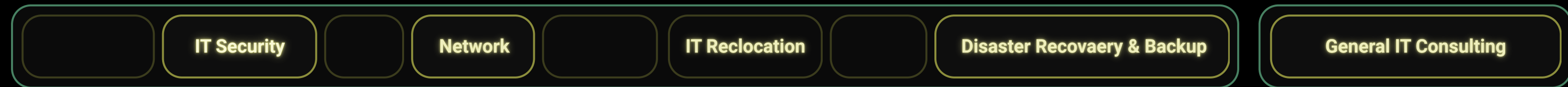
ID	Nume	Locatie	Status	Current data	Actiuni
3881	Router foleza sud-est	St. Cap. Muntea lui S.	Activ	33	Sterge
3881	Router foleza sud-est	St. Cap. Muntea lui S.	Inactiv	33	Sterge
3881	Router foleza sud-est	St. Cap. Muntea lui S.	Activ	33	Sterge
3881	Router foleza sud-est	St. Cap. Muntea lui S.	Inactiv	33	Sterge
3881	Router foleza sud-est	St. Cap. Muntea lui S.	Activ	33	Sterge
3881	Router foleza sud-est	St. Cap. Muntea lui S.	Inactiv	33	Sterge
3881	Router foleza sud-est	St. Cap. Muntea lui S.	Activ	33	Sterge
3881	Router foleza sud-est	St. Cap. Muntea lui S.	Inactiv	33	Sterge
3881	Router foleza sud-est	St. Cap. Muntea lui S.	Activ	33	Sterge

Globe Glow

Dashboard

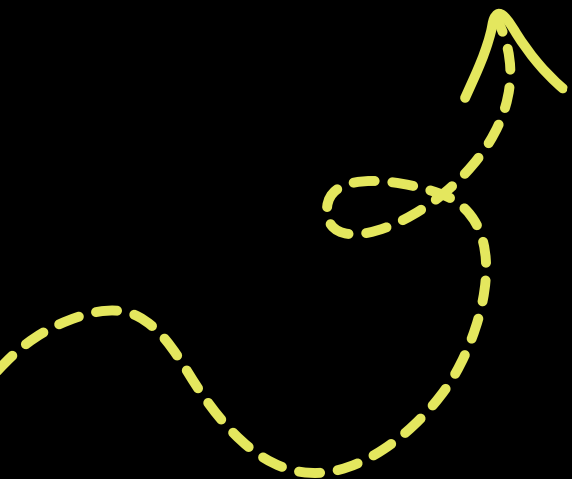


IT Consulting



As your **trusted IT partner**, we deliver more than just support — we provide the foundation for **stability, security, and growth**. Our services span across critical areas of technology, from **advanced IT Security** that shields your business from ever-evolving threats, to **intelligent Network Design and Administration** that keeps your operations running seamlessly.

We strengthen your business with **Disaster Recovery and Backup solutions**, protecting vital data and keeping you prepared for the unexpected. Beyond this, our expertise extends to **IT Relocation planning, cloud migrations**, and **tailored consulting services** that address your unique challenges and drive long-term success.



SME Digitalization

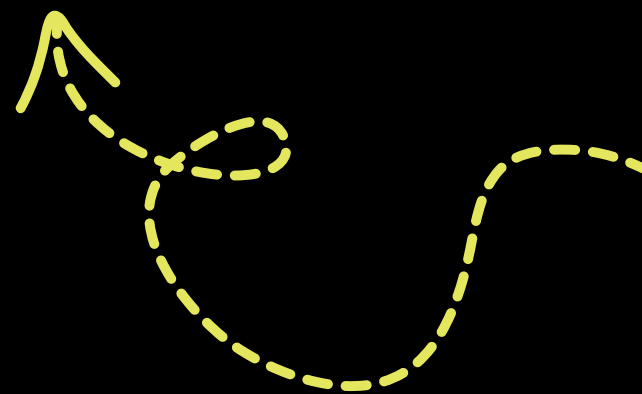


We deliver a **complete range of solutions** that empower businesses to embrace **digital transformation and innovation**. From sourcing and deploying **ICT hardware, automation, and robotics** that boost efficiency, to implementing cutting-edge technologies like **Blockchain and Artificial Intelligence** for stronger security, transparency, and customer engagement — we help companies stay ahead of the curve.

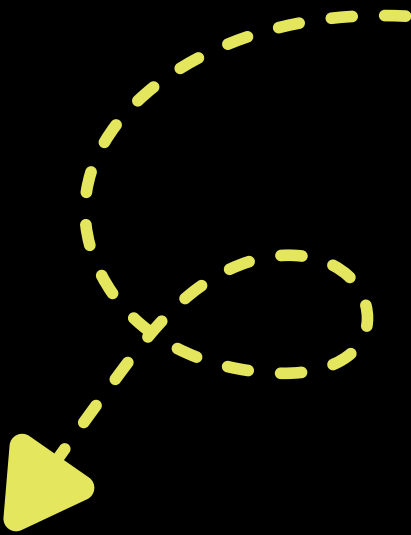
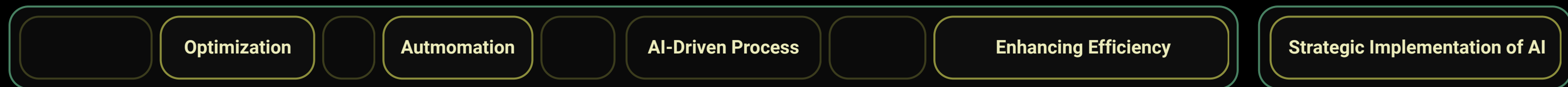
Our services go beyond technology itself. Through **specialized consulting and in-depth analysis**, we identify your unique digitalization needs, while staff training and expert support ensure seamless adoption of **Cloud and IoT solutions**. With us, your business gains not just tools, but the knowledge and strategy to thrive in the digital age.



Check it out!

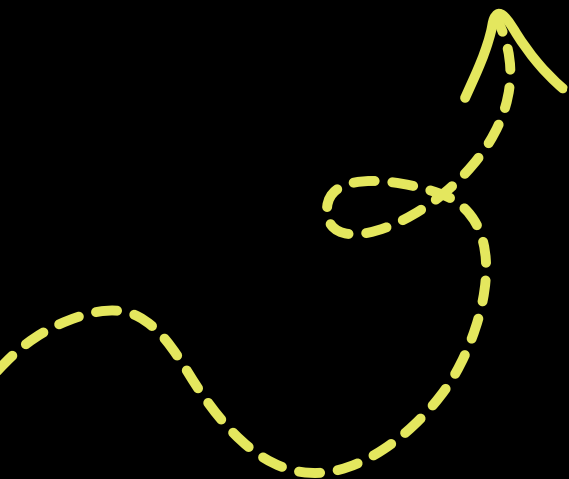


Automization on AI



In the modern business world, **AI-powered automation** is transforming the way companies innovate and grow. By intelligently managing complex processes, it unlocks new possibilities for speed, precision, and smarter resource allocation.

More than a tool, AI becomes a **strategic partner**, capable of adapting, anticipating needs, and uncovering opportunities hidden within data. This allows businesses to deliver **faster services, personalized experiences, and scalable solutions** that strengthen their competitive edge and open the door to future-ready growth.



Check it out!



A close-up photograph of a black integrated circuit (chip) mounted on a red printed circuit board (PCB). The chip is the central focus, with the letters "AI" printed in large, white, sans-serif font. Below "AI", the words "ARTIFICIAL INTELLIGENCE" are printed in a smaller, white, sans-serif font. The PCB is densely packed with various electronic components, including resistors, capacitors, and other integrated circuits, all labeled with alphanumeric codes. The board is illuminated with a strong red light, creating a high-tech, futuristic atmosphere. The background is slightly blurred, emphasizing the chip.

AI

ARTIFICIAL INTELLIGENCE

Contact us

You can choose one offer or we can custom create a new solution for your needs!

Email address

a.iacob@oniacor.com

Phone

+40 771 734 734

Visit us on

Blv. Lacul Tei 1-3, Bucharest

ALL rights reserved 2025 ©Oniacor.com

